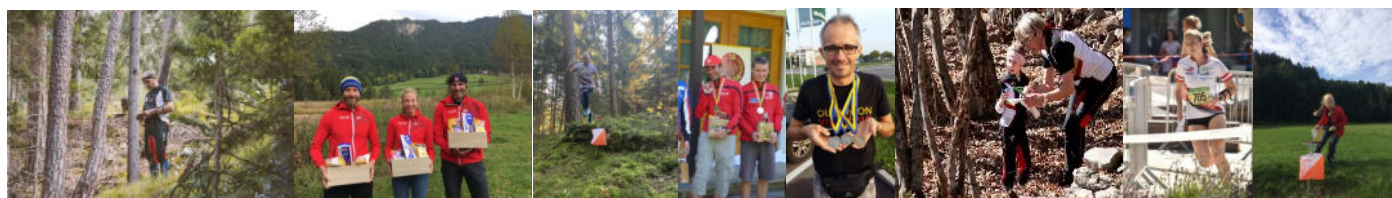
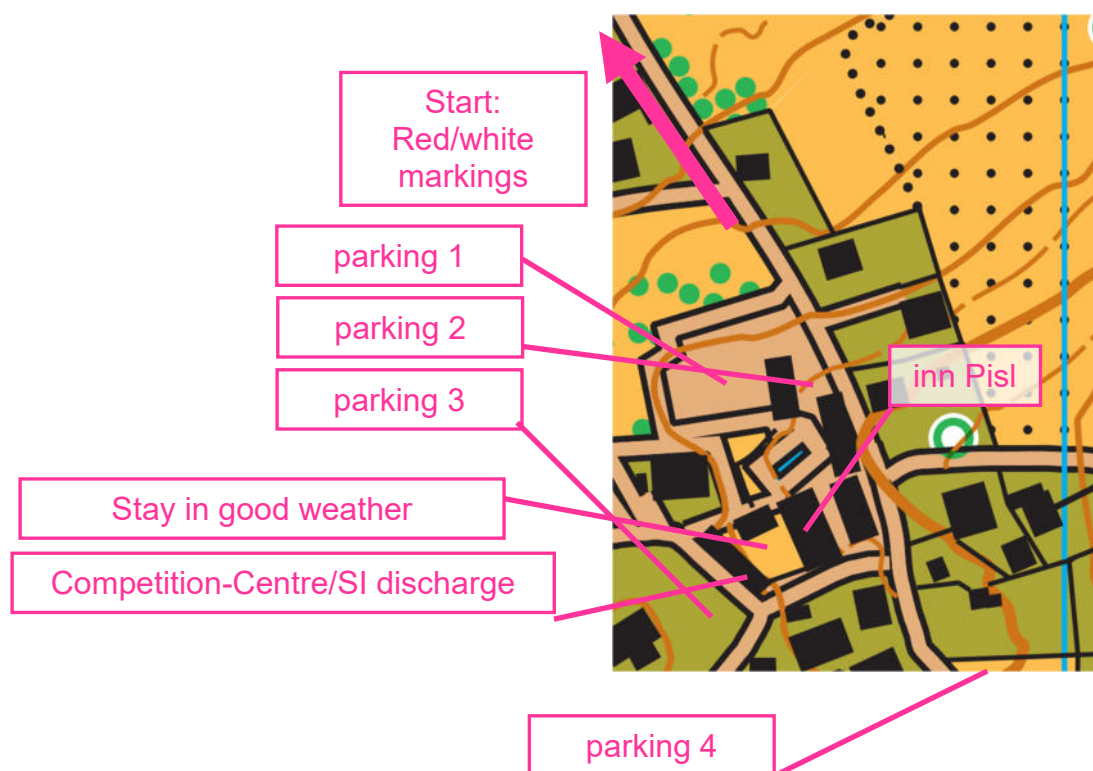


## Competition information for the 3-Regions Cup, Görtschach, 12.10.2025 (updated 05.10.2025)

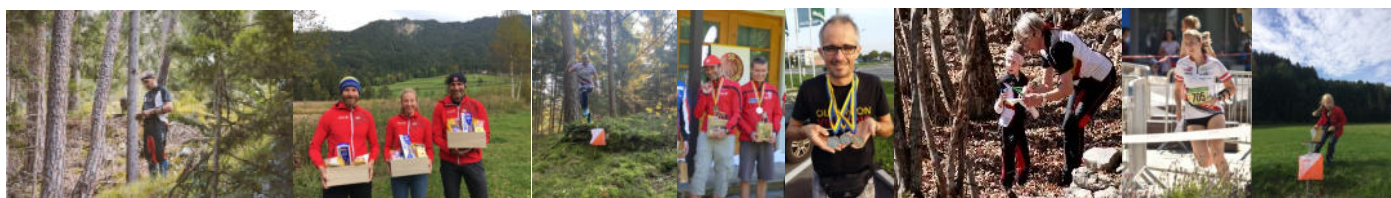
**Organizer:** KOLV  
**Implementation:** OLC Union Viktring  
**Competition Director:** Bernhard Venhauer  
**Coursesetter:** Bernhard Venhauer  
**Date:** 12.10.2025  
**Start:** First start: 11.00  
Starting lists are available from October 10<sup>th</sup>  
**Free start time for families and newcomers until 13:15**

**Competition Centre:** inn Pisl, [Görtschach 5, 9201 Krumpendorf](https://pisl.at/) (<https://pisl.at/>)  
coordinates 46.639064, 14.2315  
NO distribution of club documents! Confirmation of the entry fee transfer will be sent subsequently by e-mail upon request.

### Site plan:



- Distances:** Parking – Competition Center: max. 200 m;  
Competition Center – Start approx. 400 m and 50 m elevation gain, marked with red/white ribbons, time start to map start: approx. 50 m;  
Finish – Competition Center: approx. 100 m downhill
- Changing rooms, toilets:** only outdoors – in the parking area and at the playground/garden shed of the inn Pisl.  
Please do not enter the inn wearing running shoes (especially spikes).
- Disclaimer:** Each participant participates at their own risk. The rules of the StVO and the Forestry Act must be strictly observed (observe restricted areas)! The organizer and the organizing club assume no liability for any damage that may occur.  
Parents are responsible for their children throughout the entire event area! Water areas are not secured!
- Lounge area:** The garden near the playground west of inn Pisl, as well as the gazebo (see map), are available to us in good weather.  
Entering the indoor areas with running shoes, especially spikes, is prohibited!
- Parking:** Directly at the GH Pisl plus a meadow about 200 m south (parking spaces 1 – 4, see map) – please follow our parking attendants!
- Timekeeping:** SportIdent/SportSoftware; SI Air+ is used as a timing system; in case of failure, punch the reserve slots on the card with control pliers!  
NO rental chips!
- Map:** Hallegg/Görtschach, as of September 2025; equidistance 5 m, photograph by Bernhard Venhauer;  
Print on Pretex: waterproof, not tear-resistant  
**Scale: 1:7,500 for all categories**  
**FAIR PLAY:** don't show your map to runners not yet started!
- Course lengths:**
- | Course | Category                                 | m     | hm  | controls |
|--------|--|-------|-----|----------|
| 1      | M19-, M35-                               | 4.800 | 260 | 25       |
| 2      | W19-, W35-, M-18, M45-, M21A             | 3.800 | 175 | 17       |
| 3      | M-16, W-18, W45-, M55-, W21A, M21B, Open | 3.100 | 160 | 15       |
| 4      | W-16, W55-, M65-, W21B                   | 2.600 | 110 | 15       |
| 5      | W/M-14, W65-, W/M Hobby*                 | 2.200 | 100 | 11       |
| 6      | W/M-12, Newcomers                        | 1.600 | 60  | 9        |
| 7      | W/M-10, Family/Kids**                    | 1.200 | 50  | 8        |
- Terrain:** Very detailed, lots of hills and rocks, generally very good runnability; in places, there is dense ground cover (neophytes, brambles). The running area is heavily frequented by riders,



so make your presence known acoustically – once the horses have noticed you, there are usually no problems! **CAUTION:** All courses approach a (fenced) pasture with cows in the final section of the course – **entry is strictly forbidden! Short compulsory route in this area!**

### Control descriptions:

### Warm up:

### Start:

At the start and printed on the map;

On the way to the start.

Startup process:

1. Box: - 3 min - clear, check
2. Box: - 2 min – control descriptions
3. Box: - 1 min – maps

distance marked to map start approx. 50 m

### Symbols/notes:

Root stumps (green “x”) and fallen trees (green “T”) are generally NOT shown!



### Refreshment station:

### SI-discharge:

NONE – bring your own food and drink if necessary!

West of the Pisl Inn in the curling range - see map

Participants who do not finish the race **MUST register and read their SI card!**

### Finish closing:

### Live-results:

14.30

<https://liveresultat.orientering.se/>

### Food/drinks:

Overall results will be published on our [website](https://www.olc-union-viktring.at/) and ANNE

Gasthaus Pisl serves warm meals throughout the day—

please enjoy a little something as a thank you for allowing us to have our sports facility here 😊! Menu available at

<https://pisl.at/>

### Award ceremony:

For family participants and all three first-place winners at approximately 14:30

### General:

The event will be conducted according to the applicable rules of the KOLV competition regulations. The organizing club assumes no liability for any damage of any kind, including to third parties. Each runner starts at their own risk. The running area is not permitted until the race, except for public, passable roads. The provisions of the Road Traffic Act, the Forestry Act, and nature conservation laws must be observed. All gender-specific expressions are to be understood as referring to both genders. In case of cancellation of the event, neither the KOLV nor the organizing club assumes liability for any costs incurred.

**The OLC-Union-Viktring team wishes you an exciting running experience!**

For the OLC UNION Viktring:

Bernhard Venhauer, Chairman

